

AURA IMAGING SYSTEMS

WinAura Quickstart (Including *Windows Vista* Owners)

Minimum System Requirements:

Intel Pentium III or AMD equivalent 800MHZ (2 GHZ or faster recommended)

Windows 98 (Windows XP recommended)

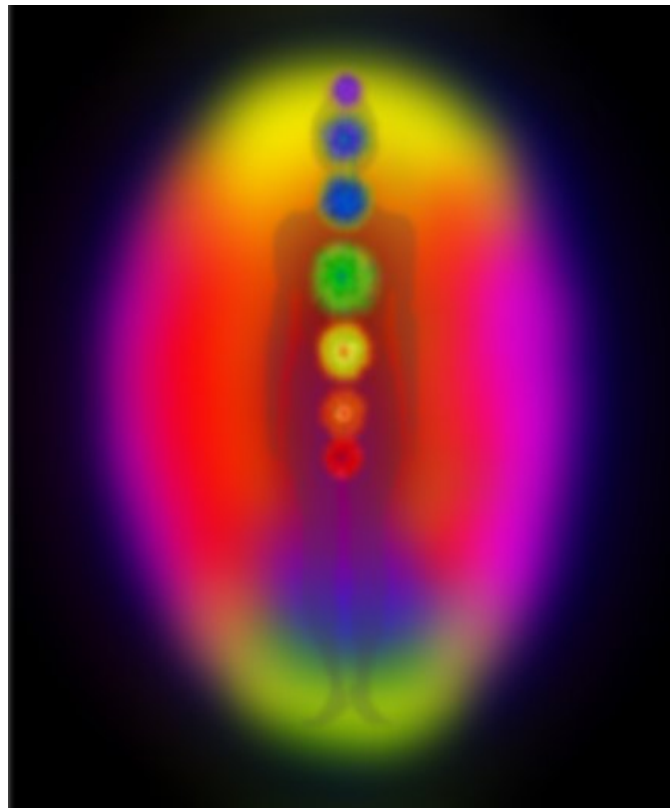
128MB RAM (256MB recommended)

60MB of hard disk space

USB port for camera

Serial port for aura sensor box

Parallel port for security dongle

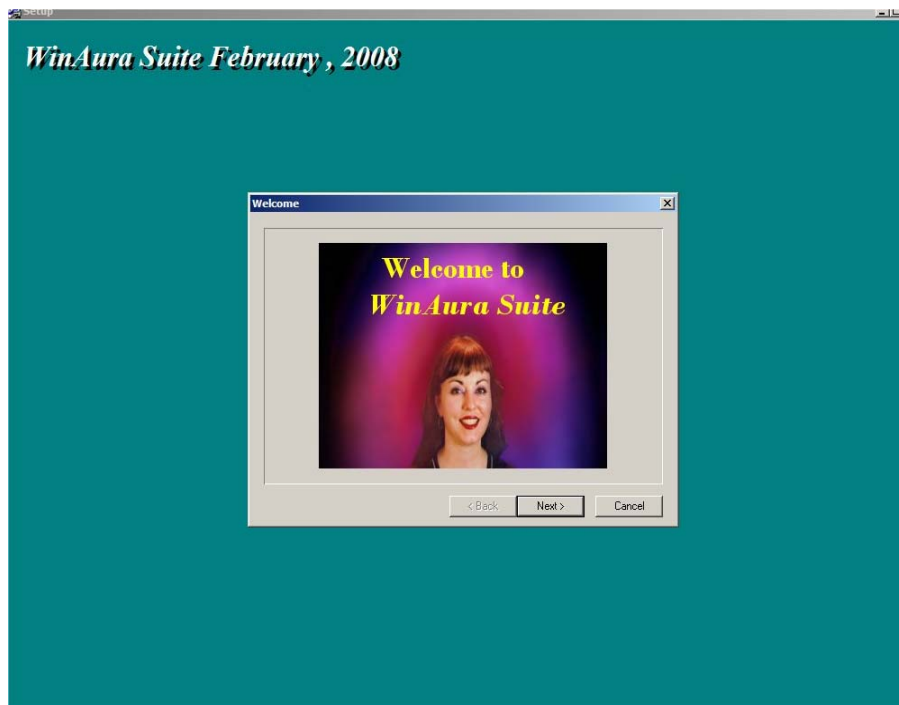


Aura Imaging Systems
116 Stambaugh St.
Redwood City, CA 94063

Upon inserting the WinAura disk into your drive, the computer will automatically begin the install process. Wait until the status bar fills completely and the install phase will begin.

Several windows will appear asking you to answer some basic questions about how to install the program to your computer. It is recommended you follow the outline given in this quick start.

The first image you should see



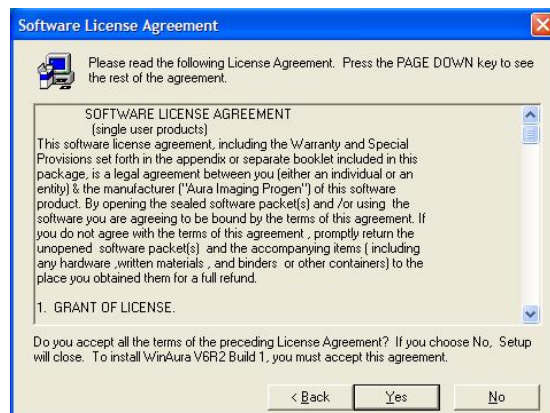
All windows from here on will appear in this basic design. You can get through this installation just by clicking **Next** on every window that appears. You must, however, select **YES** on the window that follows this image.

Still installing . . .

After clicking yes on this option, select **Next** for the next two windows that appear and the program will begin copying files to your hard drive. A final window will appear confirming that installation is complete. Select **Finish** to restart your computer. You are now ready to begin using your WinAura program.

A very important note: Be sure to connect the security key dongle to the parallel port in the back of your computer. If you have a USB security key, then connect to the USB port. Next connect the hand plate to the serial connection. Then install your camera as required. Refer to your camera's installation guide. To hook up the sensor box using a USB connector, refer to our recommended adaptor's Sealevel document. For help contact Sealevel Technical Support at (888) 365-4440.

Now go to your **WinAura User's Guide**. Carefully go through the guide and complete the steps to set up your system. Then come back and **set a restore point**. It is important to get your WinAura, your camera, and your printer operating to your satisfaction *before* you set a restore point.



Very Important

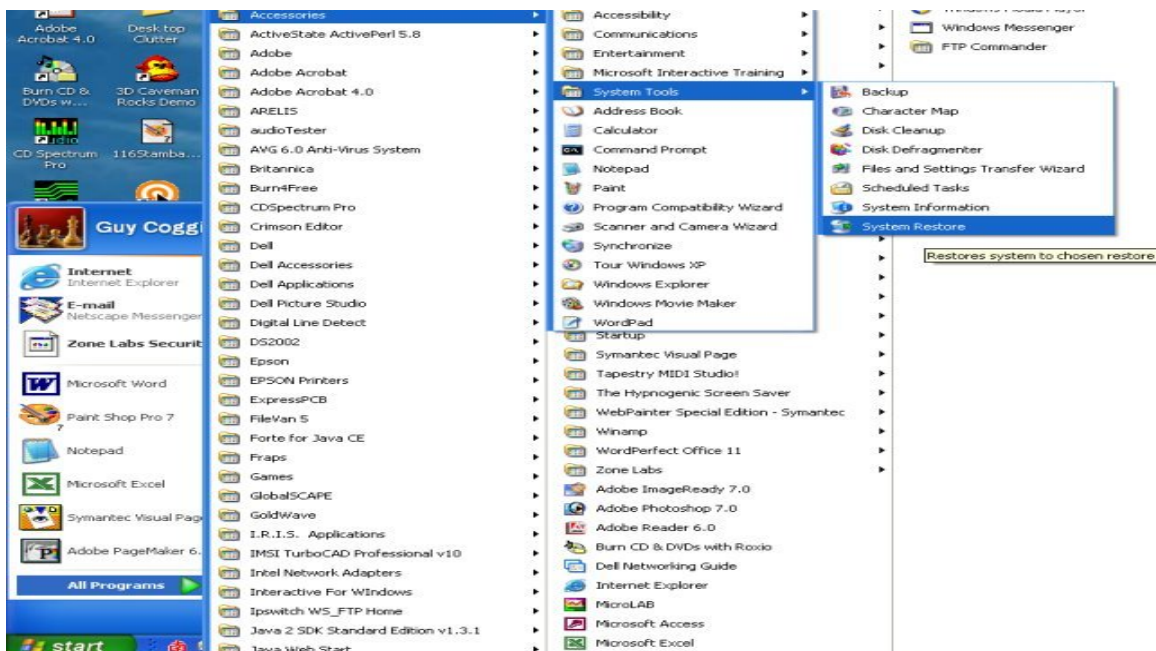
How to create a system restore point after installing WinAura . . .

After you get WinAura, your web camera and your printer up and running properly, it is important to set a restore point. System restore is a windows feature that is used to reset your computer's system configuration back to a previous point in time. This is often used to recover from serious crashes, or viruses or to recover when a program recently installed makes undesirable changes to your system settings.

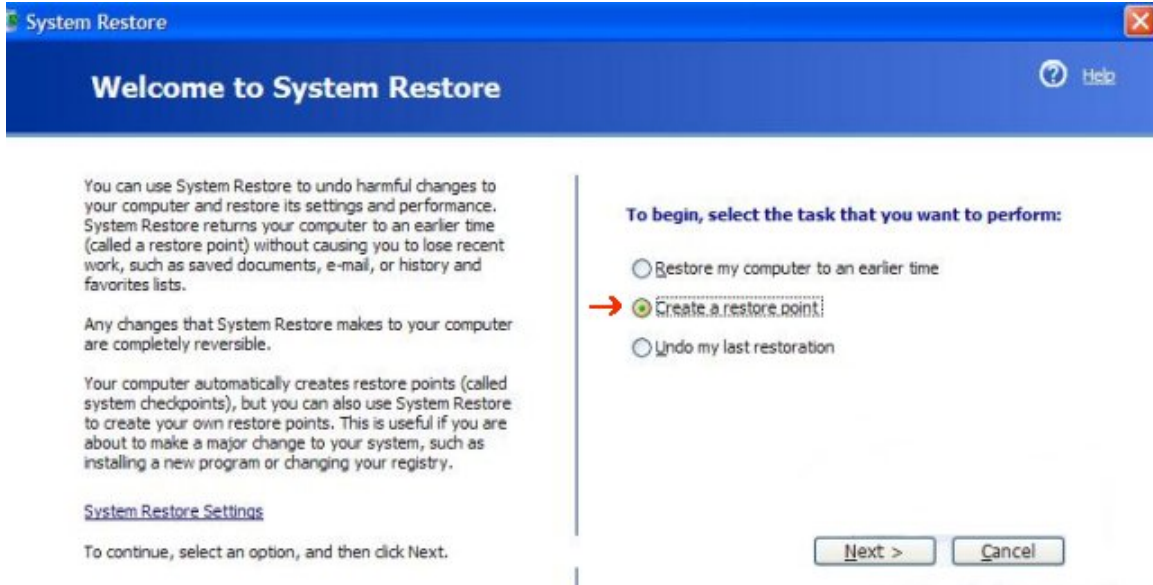
It is recommended you create a system restore point after you first test WinAura on your system and it is working perfectly. This will assure that should any problems using WinAura arise later on, you can reset to this previous system setting and be certain WinAura will work again. Please follow the steps below to create a system restore point.

First click on the **Start** button from your windows desktop, and then click **All Programs**

Then go from **Programs** to **Accessories** to **System Tools** to **System Restore**.



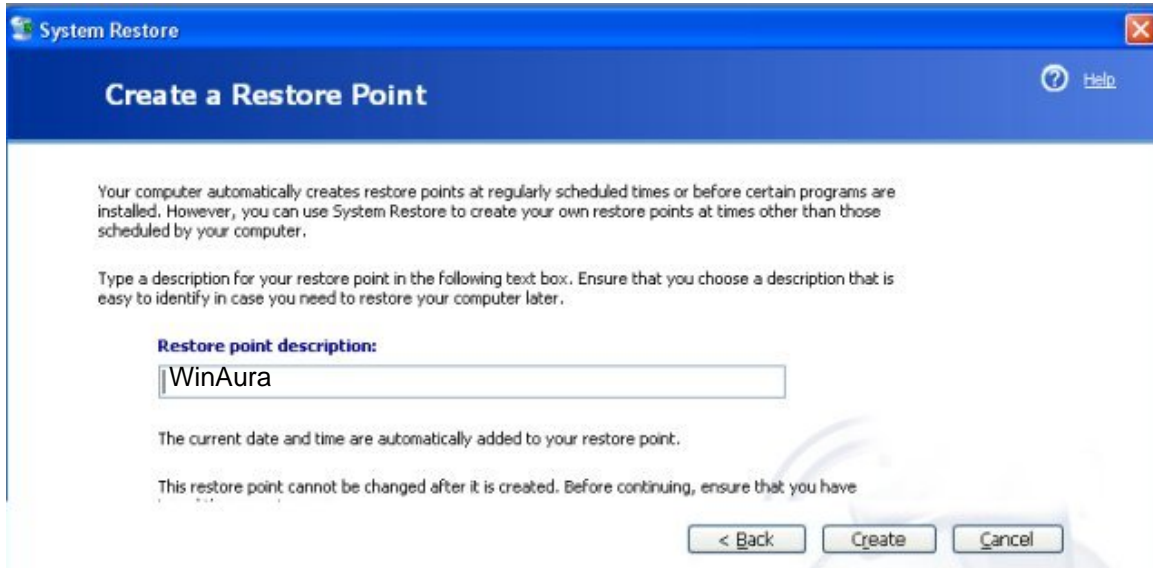
Click on system restore and you should see a screen that looks like this . . .



Choose the option to **Create a restore point** and click



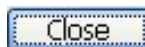
After that is done you'll be at a screen asking you to name this restore point. It is recommended you title it "**WinAura**."



Click on



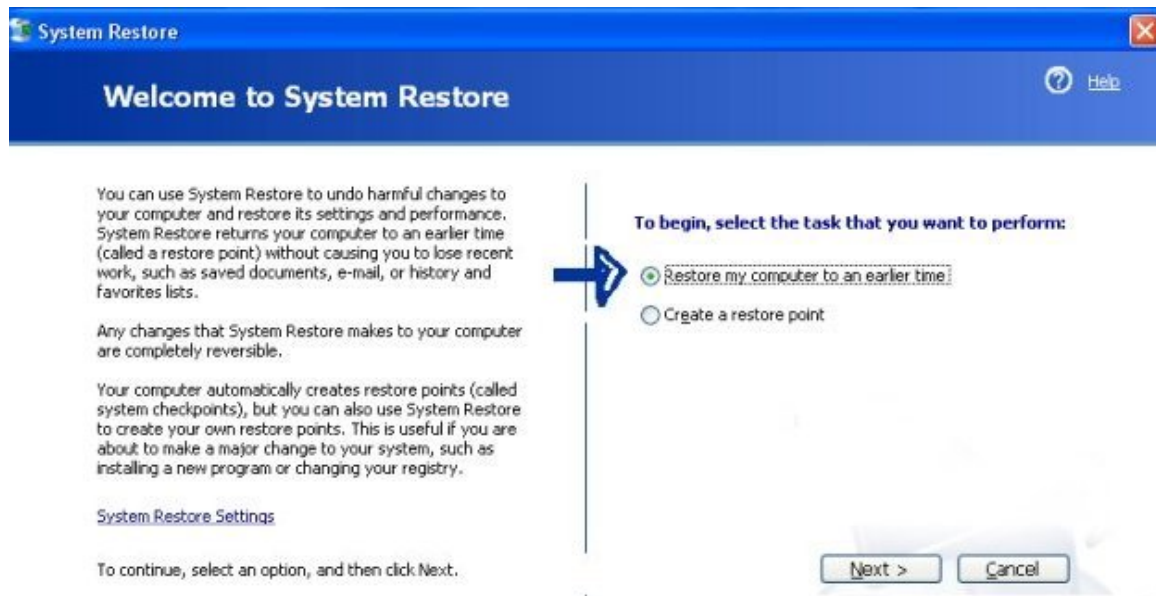
. From the next screen select



Note: If you install any new programs on your computer it will set a restore point when you install any software.

To return to a previous restore point . . .

If the worst occurs and you must restore your system to a previous checkpoint to correct a WinAura related issue, you may want to restore to a time just before you started having problems with WinAura in order to preserve any software you may have installed after WinAura. Then follow the above given instructions to get to the system restore screen shown here. Any programs you install after the date you set your WinAura point will not work.

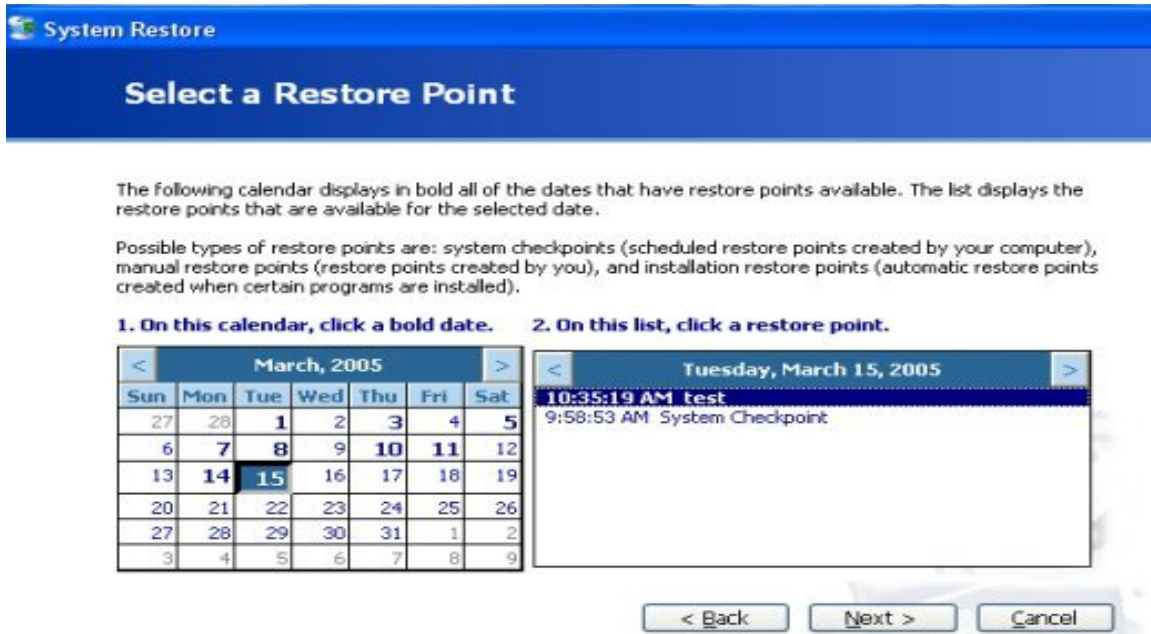



Select the option to restore your computer to an earlier time and click

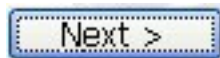
Next >

More to restore . . .

After you click 'Next' a new screen will appear asking you to choose which point you want to restore to. The right side of the screen displays a box with manually saved restore points. Select a date and time from prior to when you were having problems.



After that is done click . Read the message on the next screen, and click



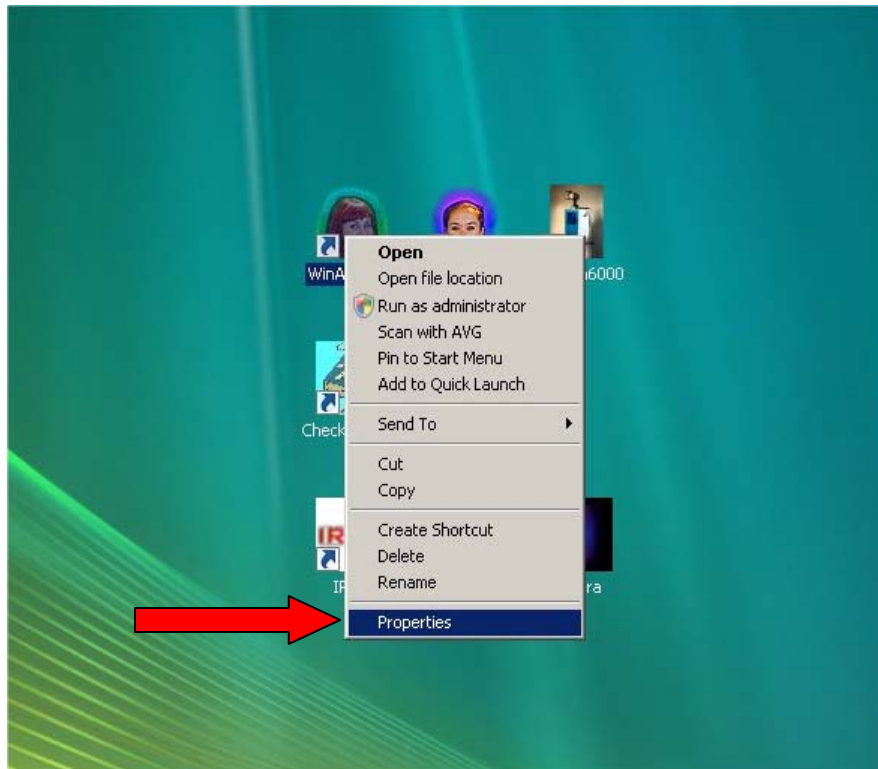
again and the restore process will begin.

After your system reboots WinAura should function correctly. For further assistance, or if you have any problems with the restore feature, see your Windows help menu or contact Microsoft.

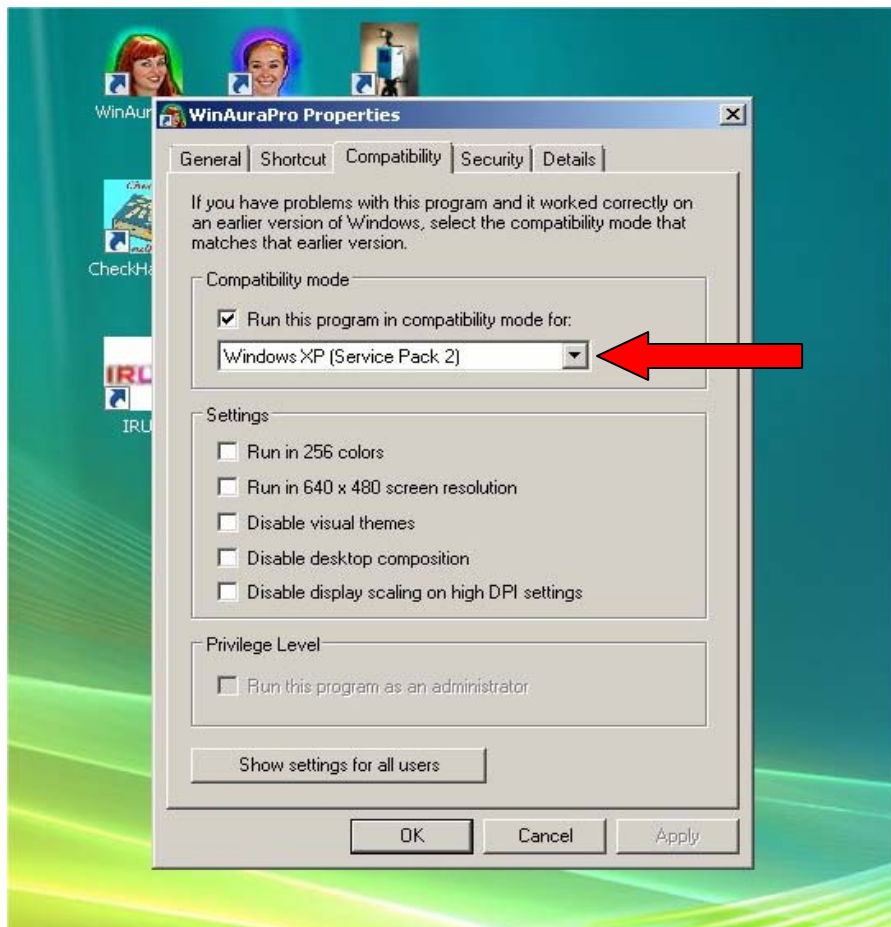
New For Windows Vista Users....

The install for Windows Vista is very much the same as it is for previous versions of Windows. Once the install is finished, there are a few things you will need to do for WinAura to work properly on a Vista System.

Number one is setting the program to run **in Windows XP Service Pack 2 Compatibility Mode**. To do this you must right click on the WinAura icon just like in the picture below. Go down the pull down menu to where it says properties and click on that button.

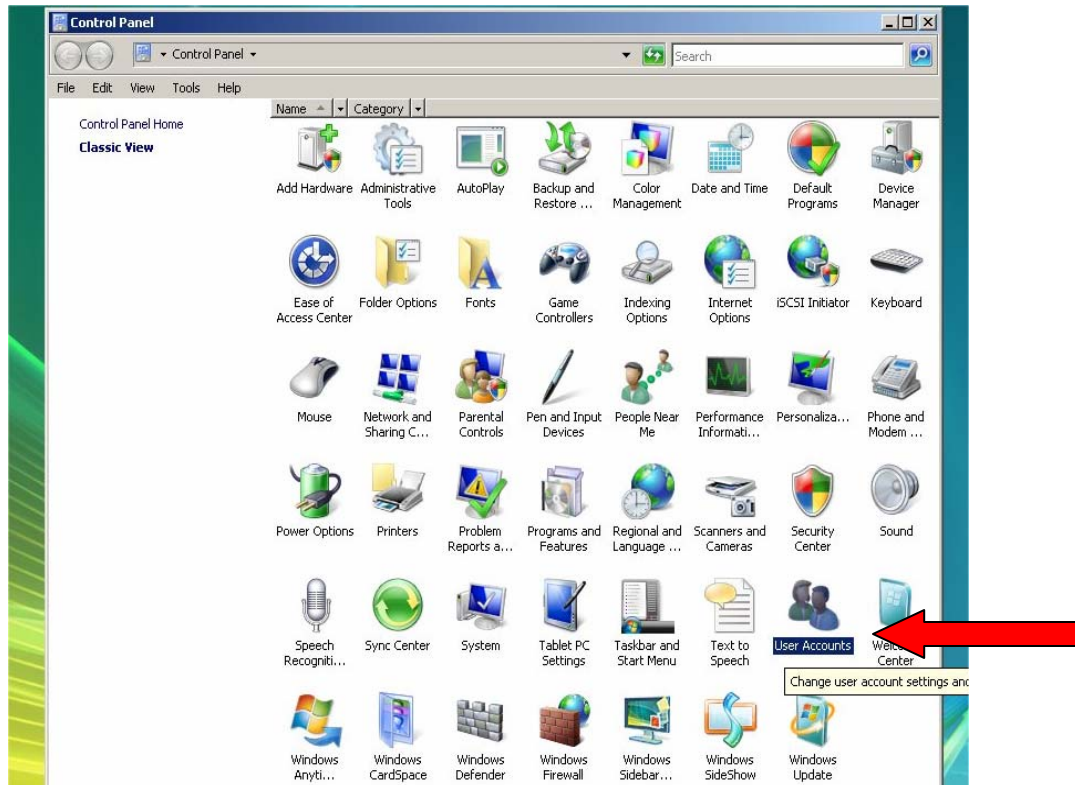


Next you must enable the **Windows XP Compatibility mode** by clicking on the tab that says Compatibility. Next put a checkmark in the box next to where it says Run this program in compatibility mode for: just like in the picture below. When you are done just click Apply, then click OK.

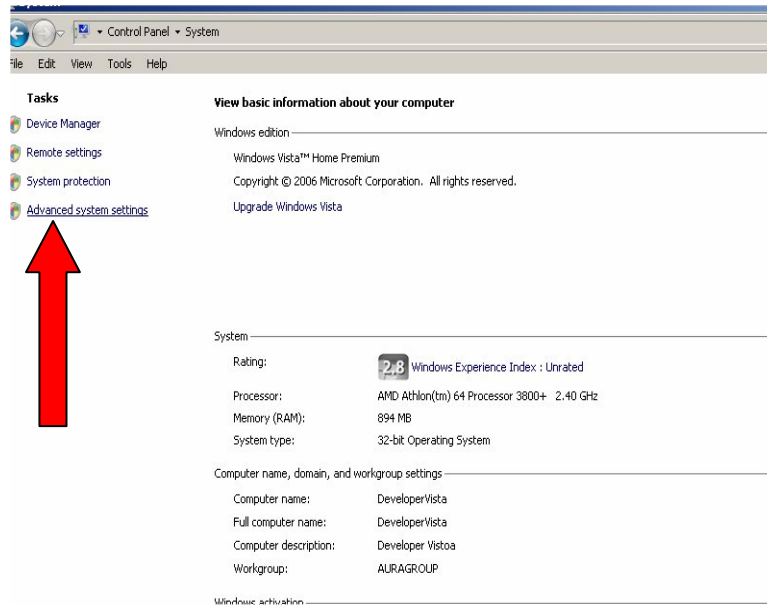


Next you must turn off the **UAC** or **User Account Control** otherwise you will never be able to save your settings in WinAura, and you will be unable to use the text editor function in the program, because with the UAC turned on it will not let you save any changes made to any document even if you are set up as the administrator.

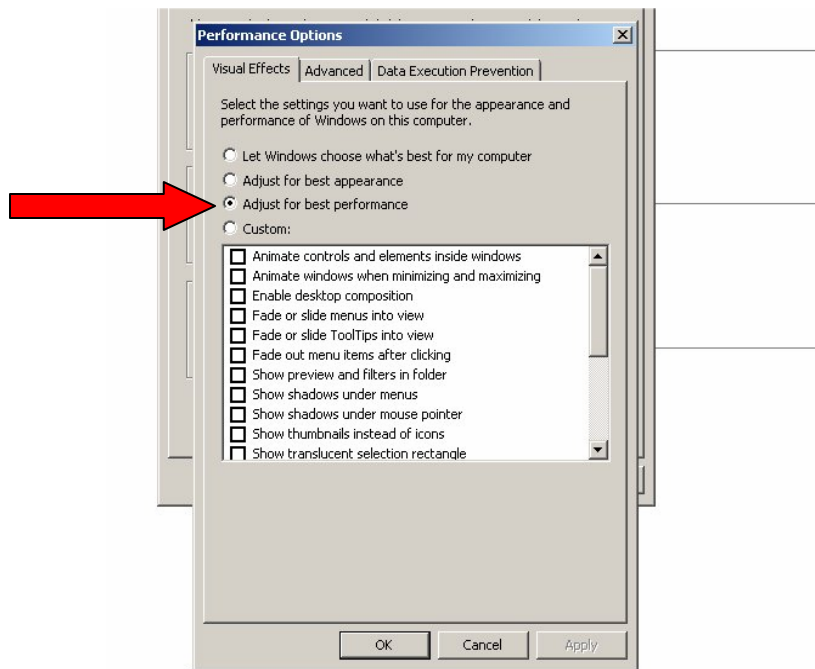
To turn off the UAC go into the Control Panel through the start menu, and double click on **User Accounts** just like in the picture below.



Next click on the link that says **Turn User Account Control Off**. Once you click that link just uncheck the box to turn that control off. When you are done go ahead and exit out of the Control Panel and you are ready to go. After you are done with that you will need to change the Windows performance settings. While you are still in the control panel double click on System, next click on Advanced Settings just like in the screenshot below.

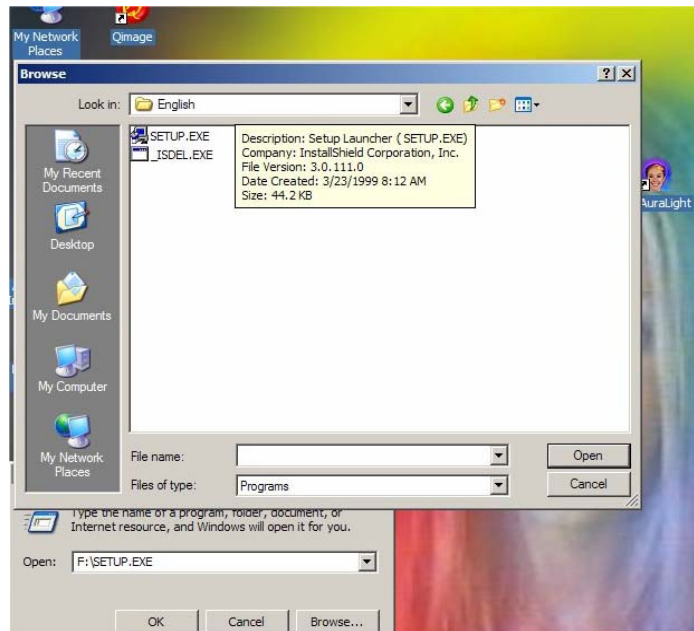


Next click on System properties, and then click on the performance button. Next click on the performance settings tab, and set **Windows to Adjust for Best Performance**.

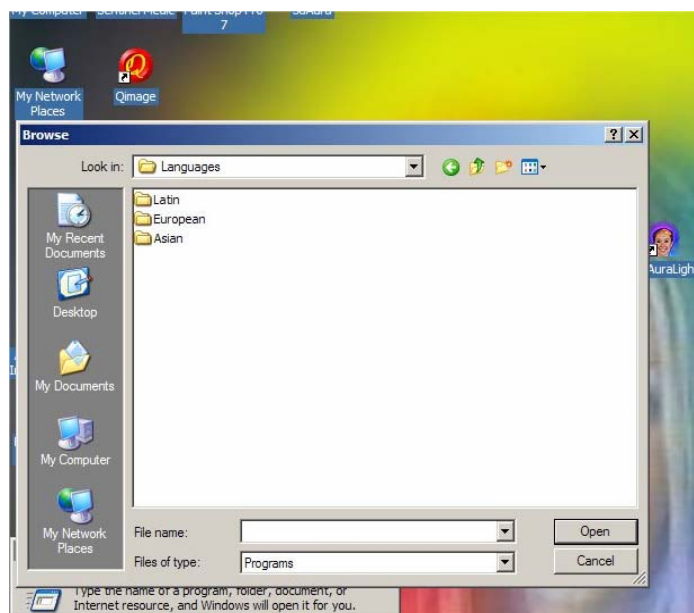


Installing Additional Languages.....

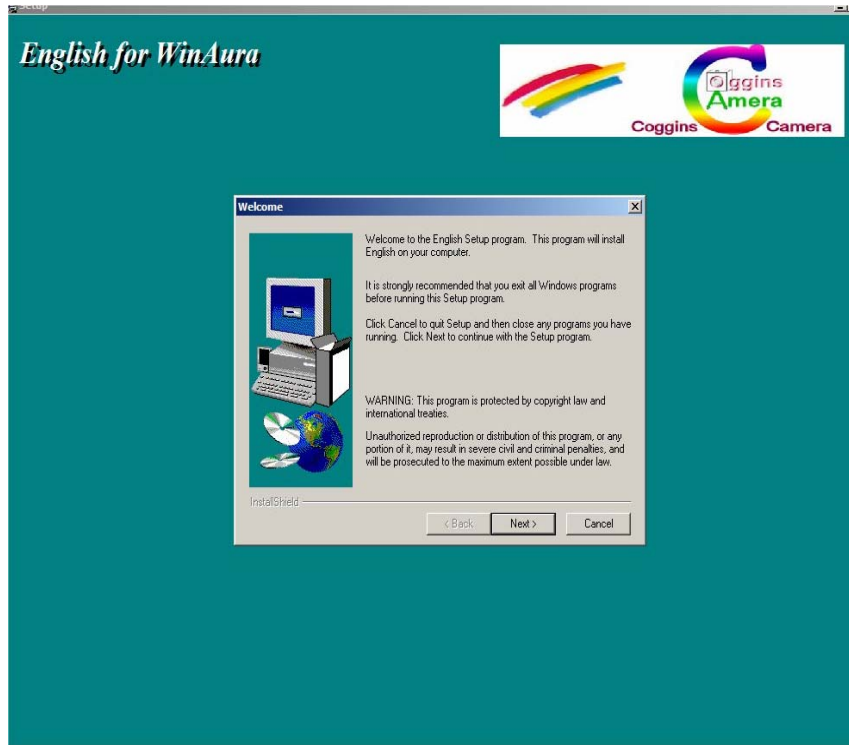
To install additional languages in WinAura first make sure the WinAura CD is still in the CD Rom drive. Click on the Start menu button, then click on Run, and then browse the CD Rom's drive letter and open the Language folder like in the picture below.



Next click on one of the main language folders to get to the language you want to install.



Once you have opened the proper language folder, double click on the **Setup.exe** icon and the program will begin to install your language to the proper folder. You can see this in the example below. When that is done you are ready to use WinAura.



Enjoy your new WinAura Quickstart from . . .

AURA IMAGING SYSTEMS

116 Stambaugh Street Redwood City, CA 94063 Customer Service (650) 261-0195